

CES Learning

Circular Economy Business Strategies and Management Course

Certified by CPD UK

Certified by the Institute of Leadership

Join the global movement to build
sustainable business models
through the circular economy



Challenges Your Organization Might Be Facing

Most organizations still operate under the outdated "take, make, dispose" model — a linear approach that no longer aligns with today's economic, environmental, or regulatory realities. This outdated system creates:

Excessive waste and environmental harm, accelerating resource depletion and pollution

Operational inefficiencies, driving up costs and exposing vulnerabilities in global supply chains

Growing compliance pressures, as international regulations demand measurable sustainability action

Strategic misalignment, where sustainability is sidelined instead of integrated into core business functions

To remain competitive and resilient, organizations must shift toward circular models that prioritize regeneration, resource efficiency, and long-term value creation.



Organizations that fail to adapt to sustainable models risk falling behind in a rapidly evolving business world

How This Course Will Transform Your Organization

Gain a solid foundation in circular economy concepts and learn how to transition from linear to circular models to achieve sustainable growth.

Use specialized tools to assess your organization's environmental and economic performance, ensuring alignment with both sustainability goals and profitability

Develop strategies to minimize waste and maximize resource efficiency while addressing the challenges posed by traditional business approaches

Strengthen your organization's competitive advantage by embedding circular economy strategies that support adaptability, innovation, and financial stability

Learn how to incorporate circular principles into your organization's operations, creating value through resource regeneration, longer product lifecycles, and sustainable design

About CES - Who We Are

CES is a trusted partner in sustainability education, helping organizations transition to environmentally and economically sound business practices through innovative learning solutions

Our programs align with global sustainability frameworks and Vision 2030, ensuring your organization stays ahead of industry trends and regulatory requirements

We believe in creating impactful change by equipping individuals and businesses with the knowledge and skills to implement sustainable, circular economy strategies

Course Overview

Welcome to CES Learning! A platform designed to inspire transformation through immersive and practical learning. By focusing on the **circular economy**, our courses equip participants with the skills to lead **impactful change** within their organizations. Grounded in CES's commitment to sustainability and innovation, the platform offers a **holistic approach** that bridges theory with actionable strategies, preparing participants to address today's most pressing environmental challenges.

The Circular Economy Business Strategies and Management Course is your gateway to understanding how businesses can thrive sustainably by adopting **circular economy principles**.

What Will I Learn?

In this course, you will:



Grasp the Fundamentals of the Circular Economy



Identify Key Challenges of the Linear Economy



Leverage Advanced Applications & Assessment



Explore Pathways for Business Transformation



Apply Circular Economy Strategies

Let's embark on this journey to reshape business for a sustainable world!



Course Duration:

- 2 Days - Workshop
- 8 hours - Live sessions
- 8 hours - hours live



Subject Area:

Circular Economy.



Format:

Blended (Live sessions, workshops, and self-paced learning)

Who is This course for?



This course is aimed at:



**Sustainability
enthusiasts**



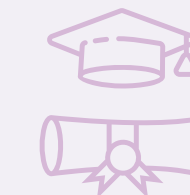
**Business
leaders**



Entrepreneurs



Researchers



Fresh Graduates

Background Requirements



**Valuable for both beginners and
those seeking to deepen expertise
in sustainability and circular
economy**



**Basic understanding of
business or sustainability
(optional)**

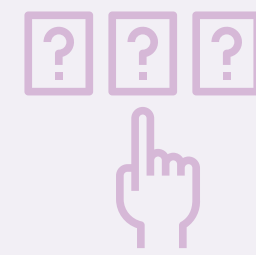
This course covers both introductory and advanced tools and strategies

Dynamic Learning Tools

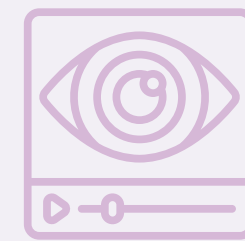
Through this course, You will access high- quality learning content that is applied into business context and discussed alongside peers.



Live sessions



Polls and
quizzes



Videos



Case studies



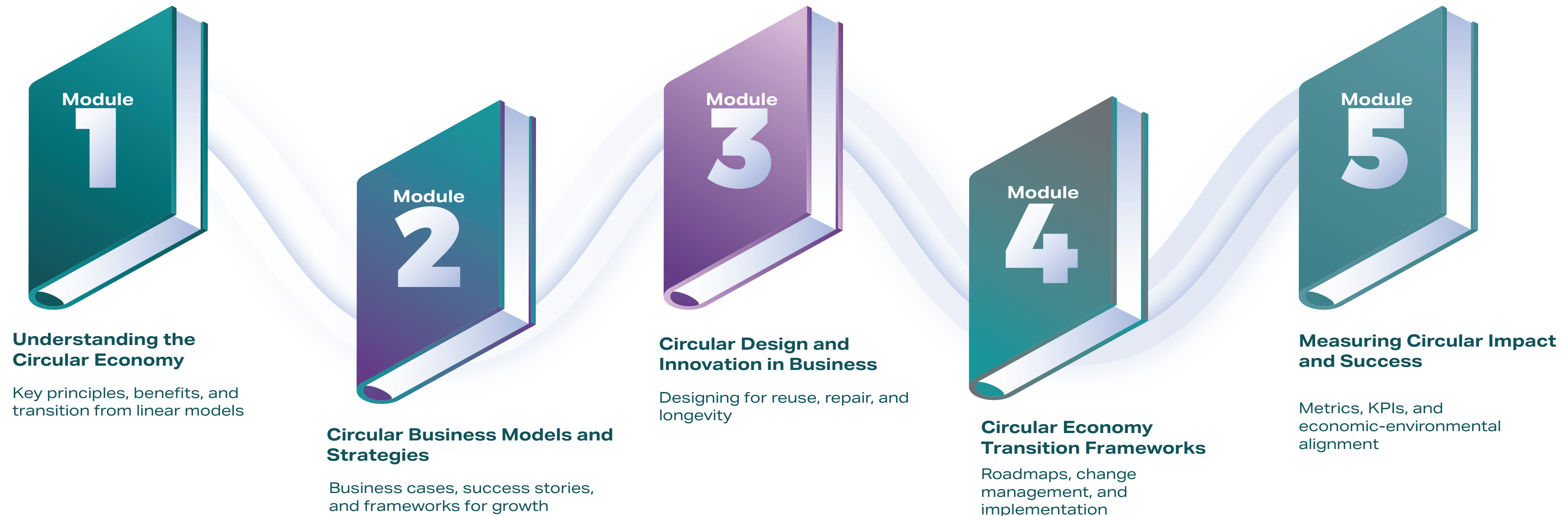
Enrichment
activities



Quiz

Course modules

This intensive course introduces you to the CE toolset, identifies core business techniques, and explores different ways of applying them. It aims to equip you with the knowledge and skills to start using the circular economy approach in your daily professional and business activities, contributing to a sustainable and profitable future.



Additional Information



Course certification: Upon completing the course, and passing the quiz, participants will receive a CES Learning Certification in "Circular Economy Business Strategies and Management."



Certification approved by CPD UK

Certification by the Institute of Leadership (UK)



The certification demonstrates an understanding of circular economy principles and practical business applications, validating your expertise in sustainable practices within business contexts.

Course Registration

Thank you for your interest in CES Learning Academy's certified training programs. To secure your place, please register using the link or scan the QR code below.

Click here to register



Scan QR Code to Register



Thank you for your interest in CES Learning Academy's certified training programs. To secure your place, please register using the link or scan the QR code below.

Course Fee:

Early Registration: **1,980 SAR**
Standard Fee: **2,100 SAR**

Register early to secure your spot and enjoy the discounted rate.



CPD CERTIFIED

The CPD Certification
Service

The content of the following has been certified by
The CPD Certification Service as conforming to
Continuing Professional Development principles

Circular Economy Business Strategies and Management Online Training

MEMBER
**CES CONSULTING
020897**

Date:
June 2025

Certificate No:
65142

The CPD Certification Service, Boston House,
69-75 Boston Manor Road, Brentford, London TW8 9JJ
E-mail: info@cpduk.co.uk Web: www.cpduk.co.uk
Tel: 020 8840 4383

Call to Action - Invest in a Sustainable Future

Join the growing number of organizations making a positive impact on the planet. Equip your team with the skills and knowledge to lead sustainable change today

Register Now
Be part of the global movement transforming
business for good

info@ces.com.sa

www.ces.com.sa

   CES Consulting_